

BICYCLING IMPROVEMENT OPPORTUNITIES

City of Fort Collins

Bicycle Advisory Committee/Transportation Board Joint Meeting

February 17, 2021



Bike Fort Collins' intent is to maintain a fluid list of intersections and road facilities that represent opportunities for improving the bicycling experience for all.

Three Additional Opportunities

- Magnolia Street/ Canyon Avenue/ Sherwood Street
- Elizabeth Street & College Avenue
- Linden Street & Poudre Trail

Magnolia St./ Canyon Ave./ Sherwood St.

- Problem/Issue:
 - High potential for confusion among motorists relative to stop sign adherence
 - Intersection so expansive that motorists may not realize bicyclists are in the intersection when they have right-of-way, or don't wait for bicyclists (feel like they can beat the gap)
 - Unsafe bicycle facility on Magnolia, east of the intersection—and on Canyon both directions



Magnolia St./ Canyon Ave./ Sherwood St.

- Survey Results:
 - Over 70% of respondents* cited having had conflict or right-of-way confusion
 - *"Cars run the stop signs on Magnolia and Sherwood constantly. I have seen many near misses. And the sight-distance at this intersection is terrible, even without anyone parked along the streets. I have also seen cars speed through even when pedestrians are in the crosswalk."*
 - *"Everyone has too far to pull out to see down the opposite streets."*
 - *"I stopped because I thought I didn't have right of way when, in fact, I did."*

*24 total respondents



Magnolia St./ Canyon Ave./ Sherwood St.

- Cyclist Experience (SB Canyon):



Magnolia St./ Canyon Ave./ Sherwood St.

- Motorist Experience
(WB Magnolia St):



Magnolia St./ Canyon Ave./ Sherwood St.

- Motorist Experience
(EB Magnolia St):



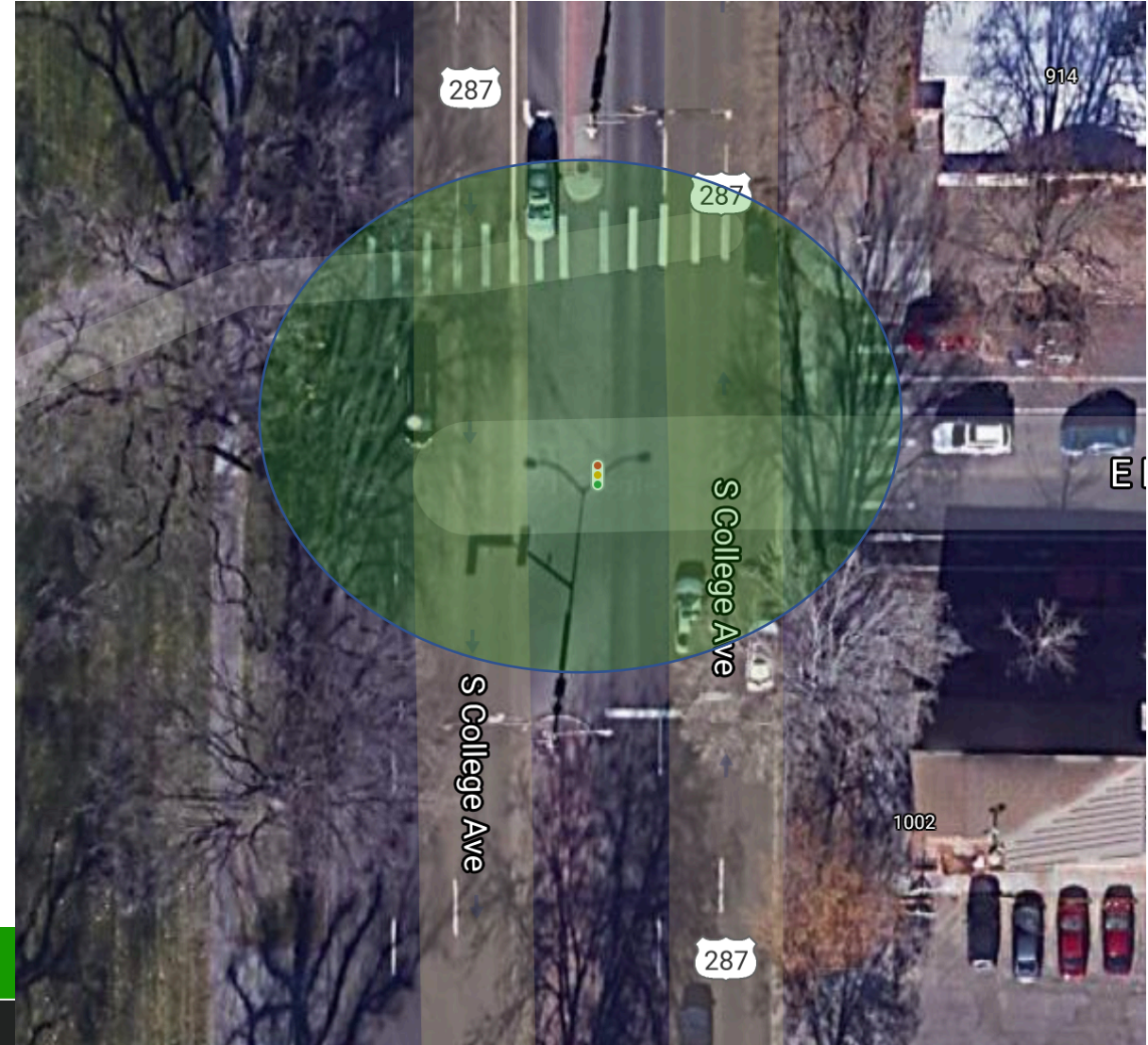
Magnolia St./ Canyon Ave./ Sherwood St.

- Solution Ideas:
 - Intersection slated for major stormwater project in next 5-years
 - What can be done in the interim?
 - Address the bike-friendliness of Magnolia from this intersection to Mason



Elizabeth Street & College Avenue

- Problem/Issue:
 - (EB) Cumbersome crossing for bicyclists traveling from campus to EB Elizabeth
 - Currently requires a "Dutch" crossing
 - Incites cutting across the intersection on a diagonal (NW to SE) timing the light after left-turning WB Elizabeth traffic turns S onto College
 - Or, incites crossing College Ave at crosswalk and then riding contraflow on EB Elizabeth until merge across entire street into bike lane can be made
 - Narrow path for both bike and peds



Elizabeth Street & College Avenue

- Cyclist Experience
(EB Elizabeth)
Diagonal Crossing



Elizabeth Street & College Avenue

- Cyclist Experience
(EB Elizabeth)
Crosswalk Crossing



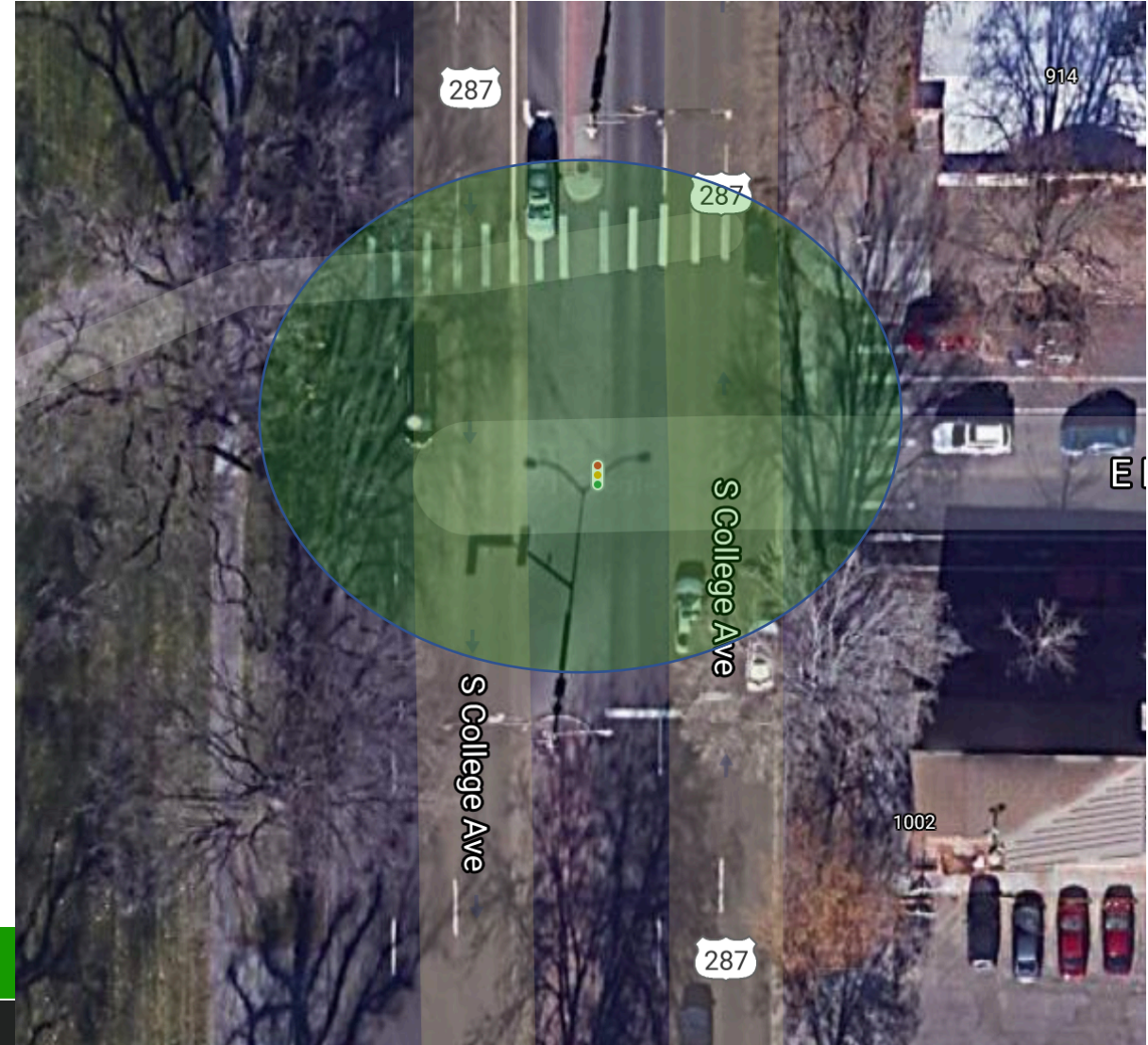
Elizabeth Street & College Avenue

- Cyclist Experience
(WB Elizabeth)
Bike Lane Crossing



Elizabeth Street & College Avenue

- Solution Ideas:
 - Create "Barnes Dance" or scramble-type crossing and re-time the signal to allow for a diagonal crossing segment. Add road markings to indicate the diagonal crosswalk
 - Create a separate crosswalk on the south side of the intersection



Linden Street & Poudre Trail

- Problem/Issue:
 - (WB/EB) Despite signage, still not clear to bicyclists that need to cross Linden, then travel SW or NE (over Poudre River) to meet back up with trail
 - Vehicular traffic can tend to exceed the speed limit through this stretch making it hard for trail users to cross.



Linden Street & Poudre Trail

- Survey Results:
 - 89% of respondents* cited having had conflict or right-of-way confusion
 - *"Given the volume of bike traffic the curb cut is too narrow and causes conflict with other bike users and car traffic. Also the bus stop has the bus moving into the bike lane and causes conflict with bikes."*
 - *"Almost hit by other cyclists or cars confused about where the bike trail continues."*
 - *"Vehicles coming too fast from both directions. I ended up riding on the sidewalk against traffic. Illegal"*

*9 total respondents



Linden Street & Poudre Trail

- Motorist Experience
(NB Linden St):



Linden Street & Poudre Trail

- Solution Ideas:
 - Road markings: 1) to make it clearer to trail users where the trail goes, and 2) to serve as a traffic calming device for vehicles
 - Table crosswalks with bollards along bike lanes on bridge
 - Create a two-way bike lane (with contra flow across the bridge) on one side of Linden to eliminate one of the two crossing points
 - Ideally-grade separate the trail under the bridge



Miss Anything?

- Are there any intersections or road facilities that we've missed?
 - Let us know—can add to the list and/or highlight and present on the intersection road facility or area at a future meeting.
- Would still love to come back to share more/other opportunities

THANK YOU

Dave Dixon

dave.dixon@bikefortcollins.org